

Effect of vaccines against pancreas disease in commercially reared Atlantic Salmon

Magnus V. Røsæg*, Arnfinn Aunsmo**
and Ragnar Thorarinsson***

*SalMar,

** Barkbekken, *** Elanco

Objectives

Measure efficacy of PD vaccines in commercially reared Atlantic salmon using mortality and growth as the key outcome variables

With emphasis on the two most recent commercial PD vaccines.
(Clynav™ and Alpha Ject micro® 1 PD)

PIT-tag study

Maxilla study

Cage study

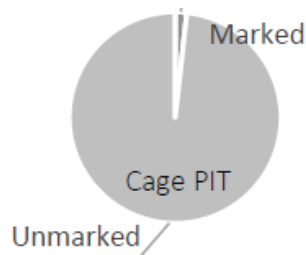
Vaccines used in field trial

Vaccine Group ID	Vaccine name	Dose	Group	Applied in study
AJm6	ALPHA JECT micro [®] 6	0.05 ml	Control	PIT-tag, Maxilla, Cage study
CIm6	ALPHA JECT micro [®] 6	0.05 ml	Test vaccine	PIT-tag, Maxilla, Cage study
	Clynav [™]	0.05 ml		
PDm6	ALPHA JECT micro [®] 6	0.05 ml	Test vaccine	PIT-tag, Maxilla, Cage study
	ALPHA JECT micro [®] 1 PD	0.05 ml		
Saline	Saline	0.05 ml	Control	PIT-tag
PD7	Aquavac PD 7 vet.	0.1 ml	Test vaccine	PIT-tag
A6	Aquavac 6 vet.	0.1 ml	Control	PIT-tag

All groups were in addition vaccinated i.p. with ALPHA DIP ERM

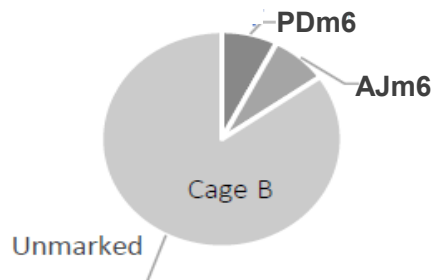
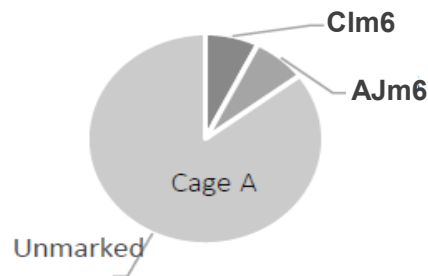
Experimental outline

PIT-tag study



Vaccine group	Starting no. fish
AJm6 (control)	580
Clm6	589
PDm6	567
Saline	478
PD7	583
A6	538
Total	3,335

Maxilla study



~15,000 marked fish per group per cage

Cage study

Cage 1
AJm6

193,603

Cage 2
AJm6

195,533

Cage 3
Clm6

191,470

Cage 4
Clm6

194,180

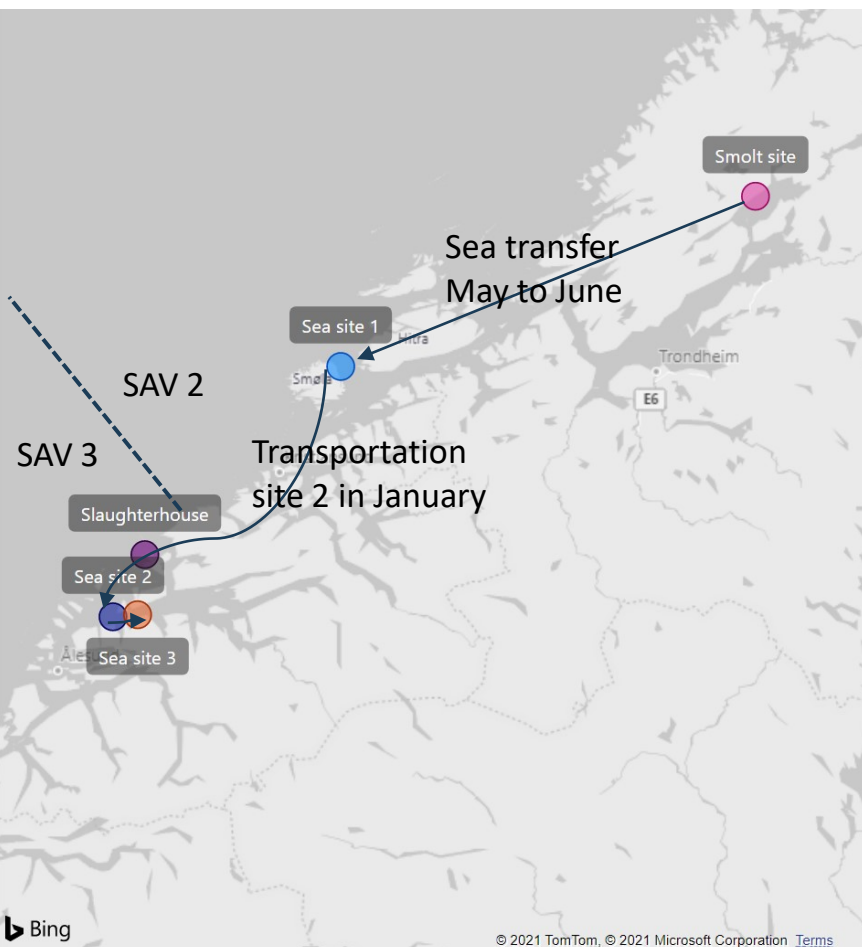
Cage 5
PDm6

185,723

Cage 6
PDm6

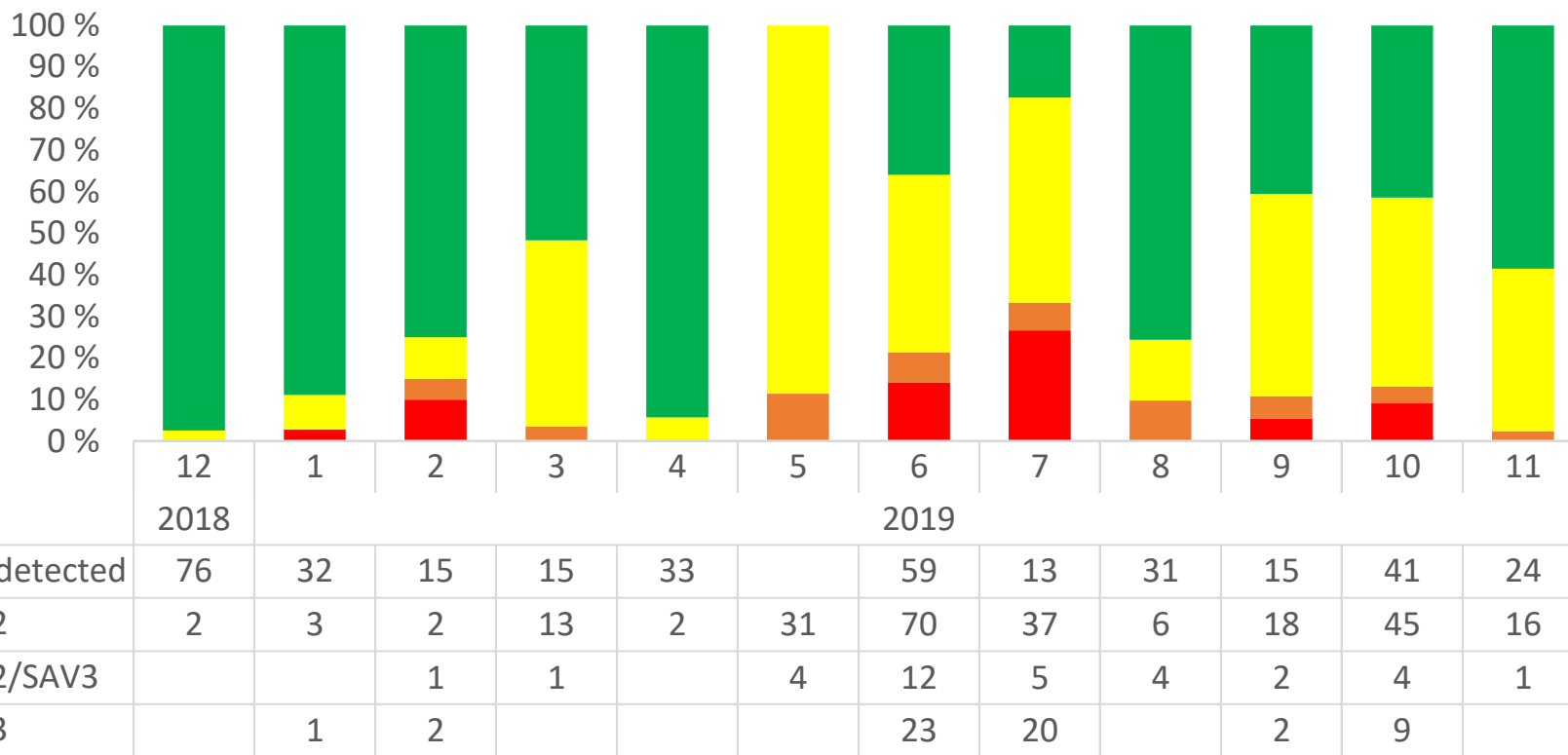
190,873

Timeline target population

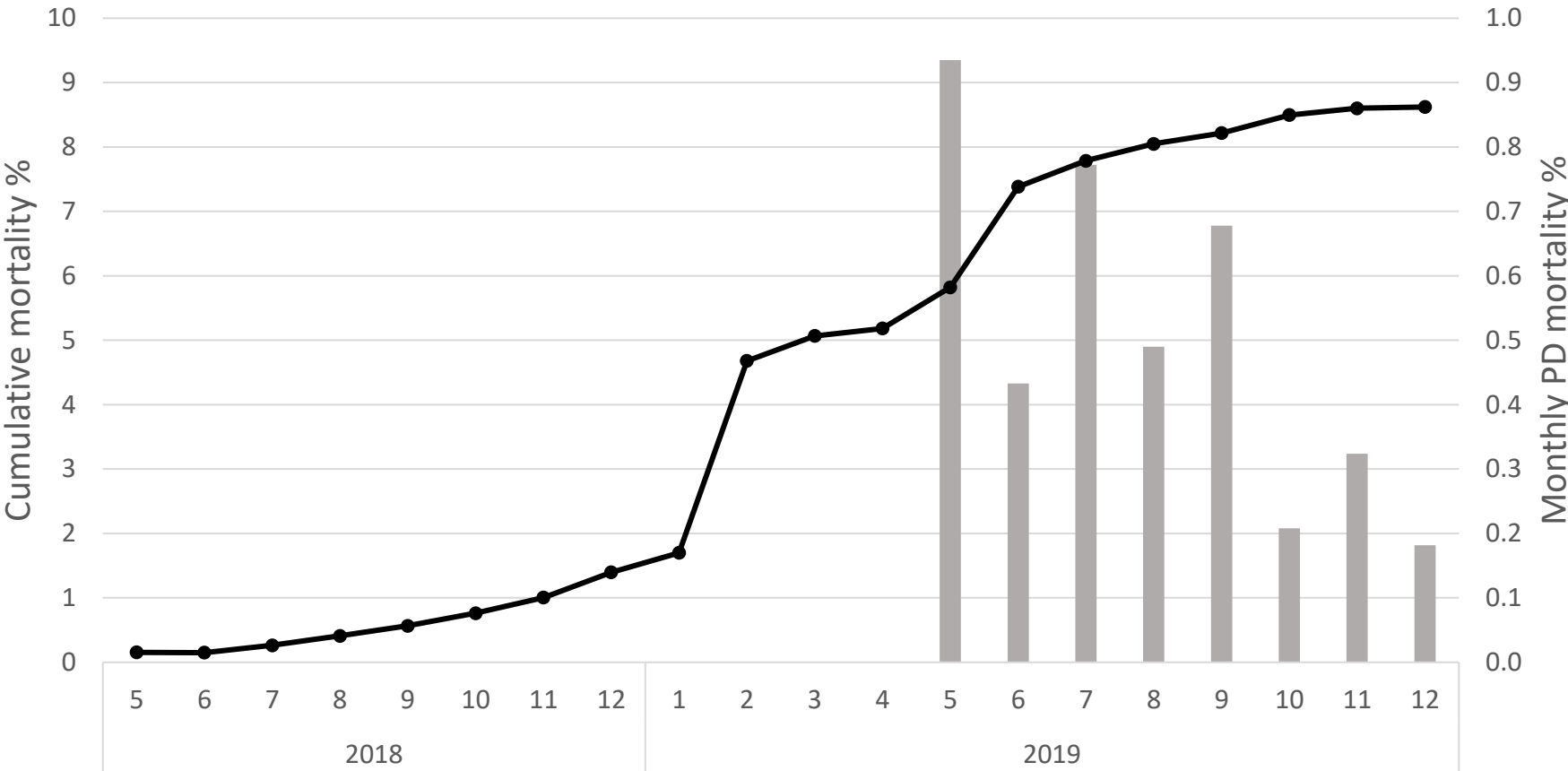


- Vaccinated Jan- Feb 2018
- Sea transfer in May to June 2018
- Moved south to SAV3 area in January 2019
- Harvested from June to December 2019

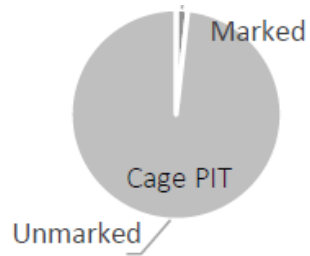
Prevalence of SAV subtypes



Cumulative mortality of target population (all causes vs. PD)



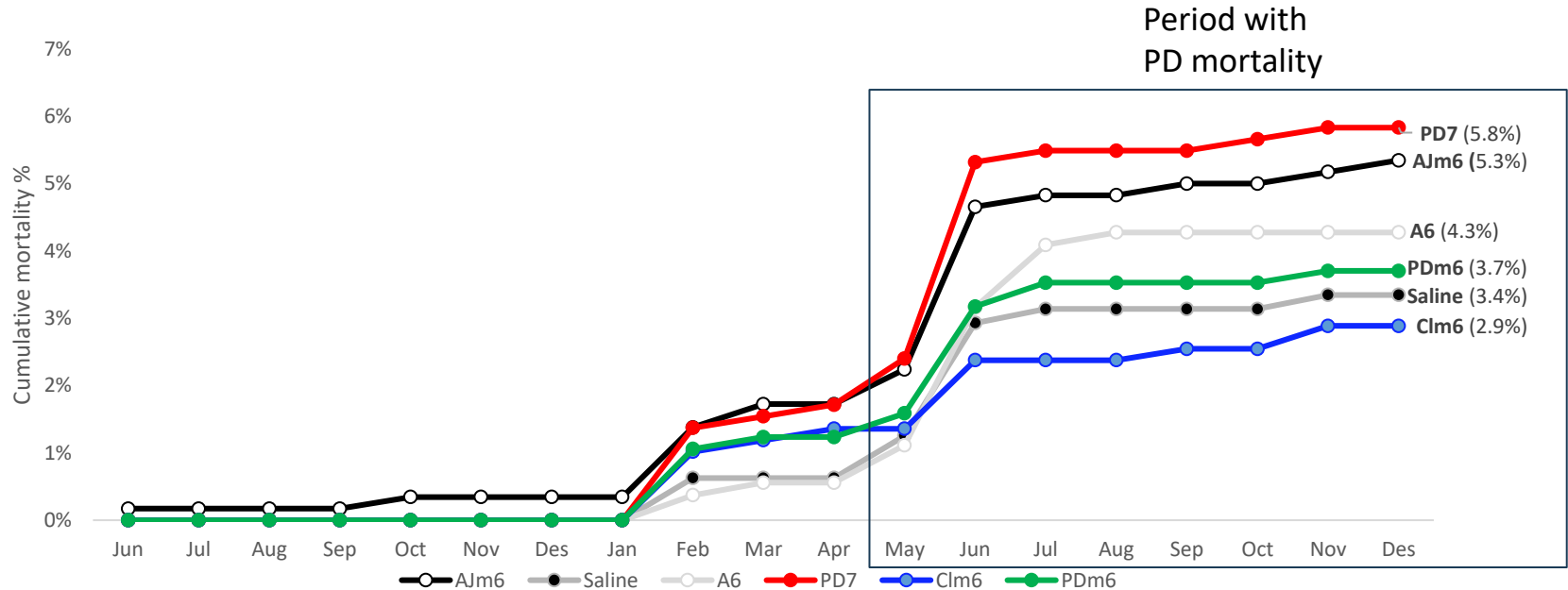
PIT-tag study



Vaccine group	Starting no. fish
AJm6	580
Clm6	589
PDm6	567
Saline	478
PD7	583
A6	538
Total	3,335



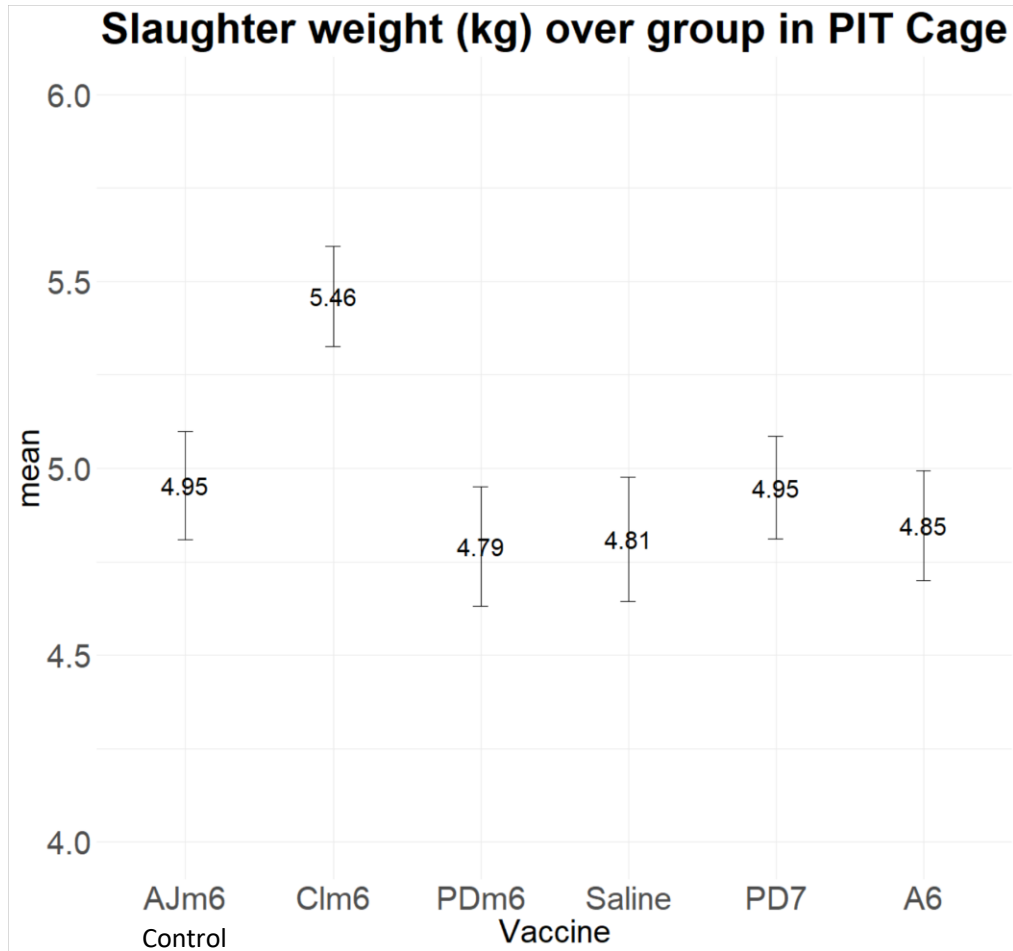
PIT-tag study - mortality



Vaccine group	AJm6	Clm6	PDm6	Saline	PD7	A6
Recatch (%)	60	65	59.3	63.2	59.3	58.2
CI: Diff. from baseline %	Baseline	-10.7, 0.7	- 5.1, 6.7	-9.2, 2,9	-6.4, 5.3	-4.1, 7.8
No. fish sampled	348	383	336	302	353	313

PIT-tag study – weights at slaughter

Bled non-gutted

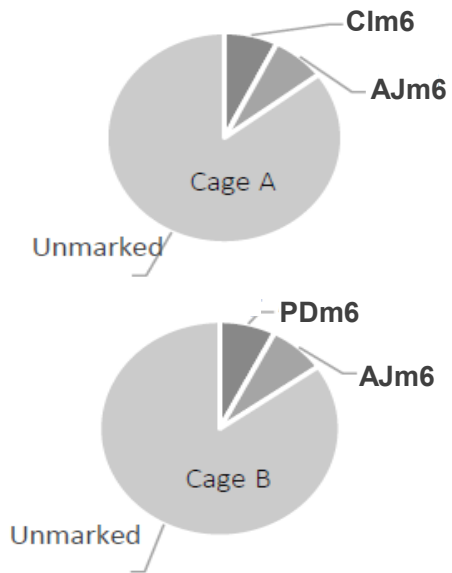


PIT-tag study – results of statistical analysis (OLS regression)

Explanatory variables	Estimate	CI	p-value
Intercept	2.02	1.68, 2.36	<0.01
Vaccine group (AJm6)			
Clm6	0.43	0.29, 0.57	<0.01
PDm6	-0.01	-0.16, 0.13	0.48
Saline	0.01	-0.15, 0.15	0.21
PD7	-0.02	-0.17, 0.12	0.71
A6	-0.10	-0.25, 0.05	0.48
Sex (male)	1.09	1.00, 1.18	<0.01
Weight vaccination (g)	0.05	0.04, 0.06	<0.01
Runt(no)	-2.11	-2.24,-0.1.98	<0.01

Results of Ordinary Least Square (OLS) regression analysis with slaughter weight in kg as outcome variable. Control vaccine AJm6, as baseline among the vaccine groups, female as baseline in sex and no as baseline in runs. Total 2031 observation, four observations deleted due to missing values. Adjusted R²= 0.50.

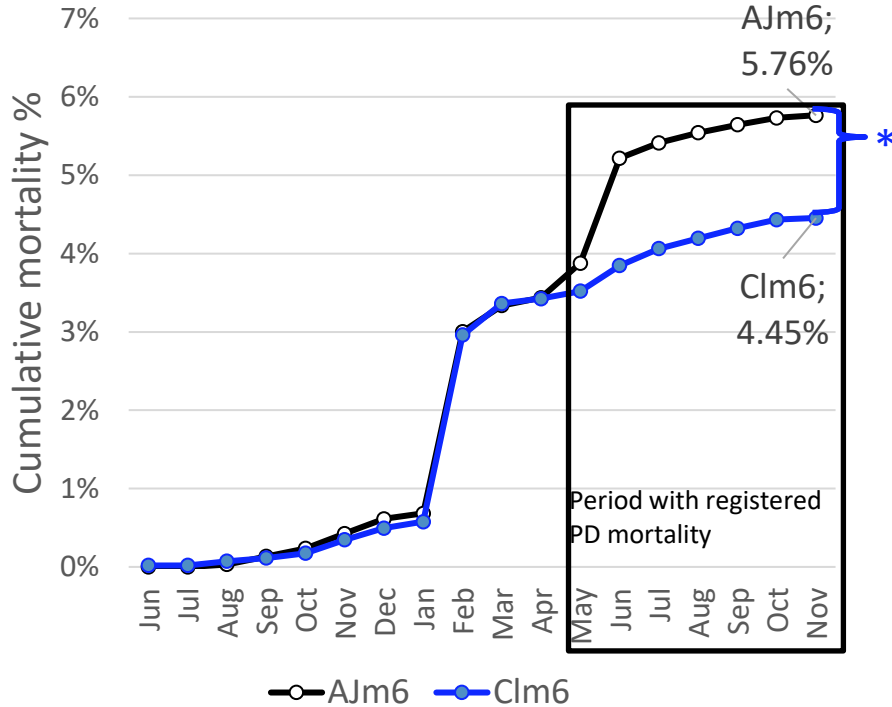
Maxilla study



~15,000 marked fish per group per cage

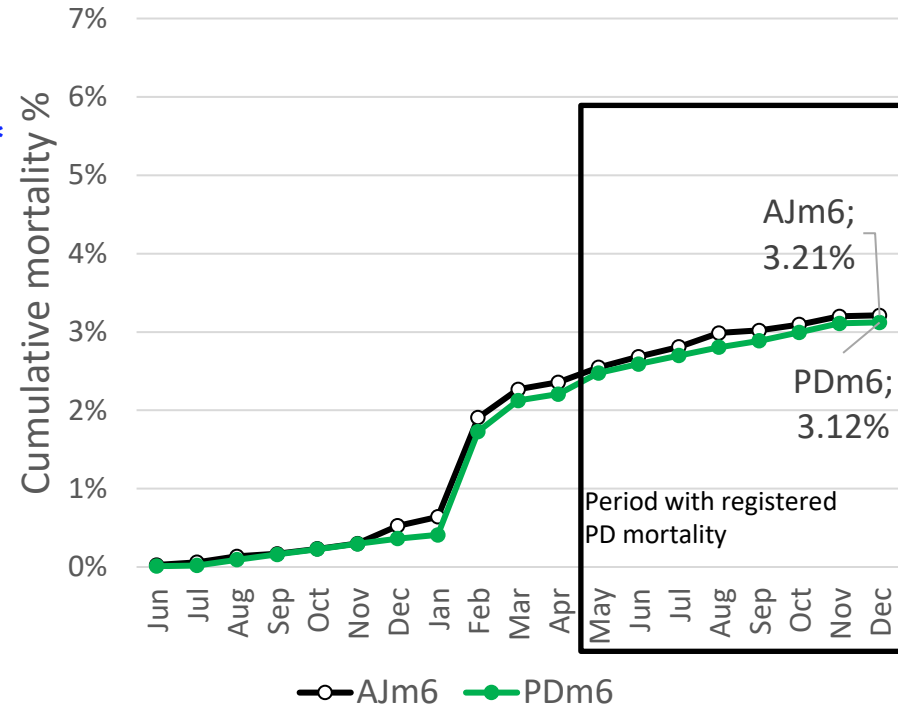


Cage A

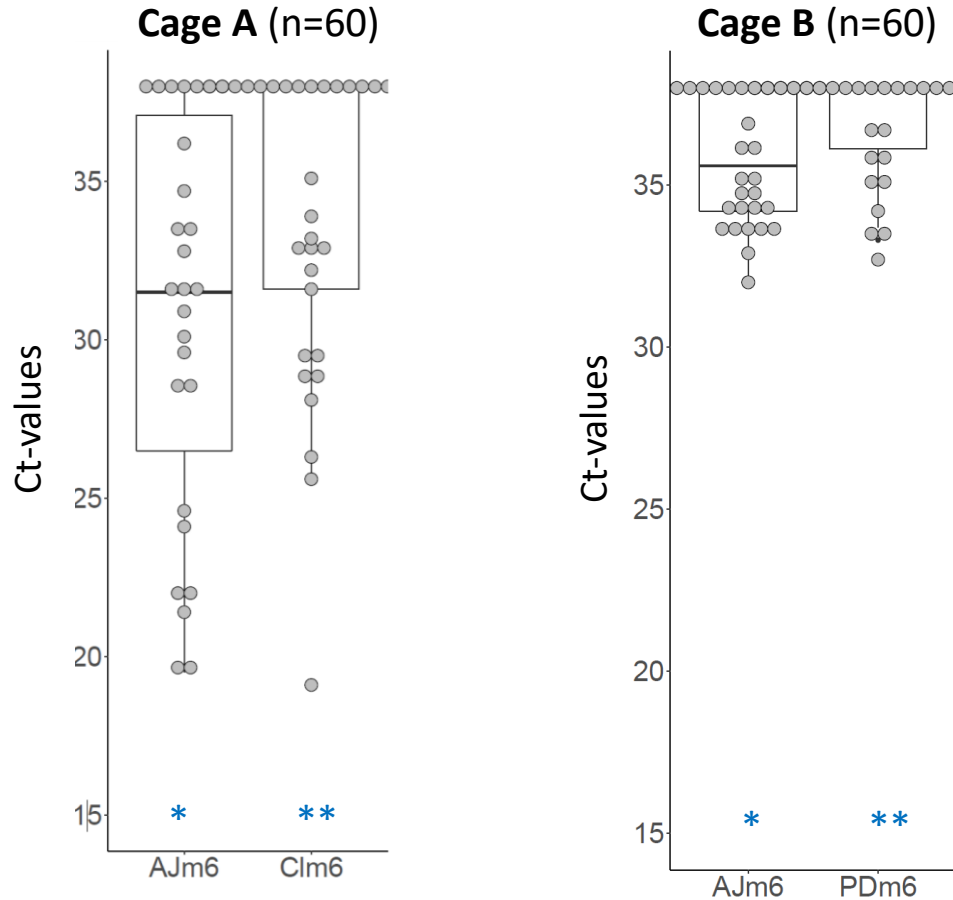


* CI difference: -1.82 %, -0.80 %, $p < 0.01$

Cage B



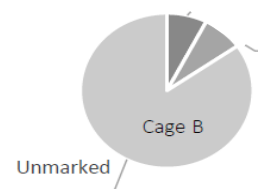
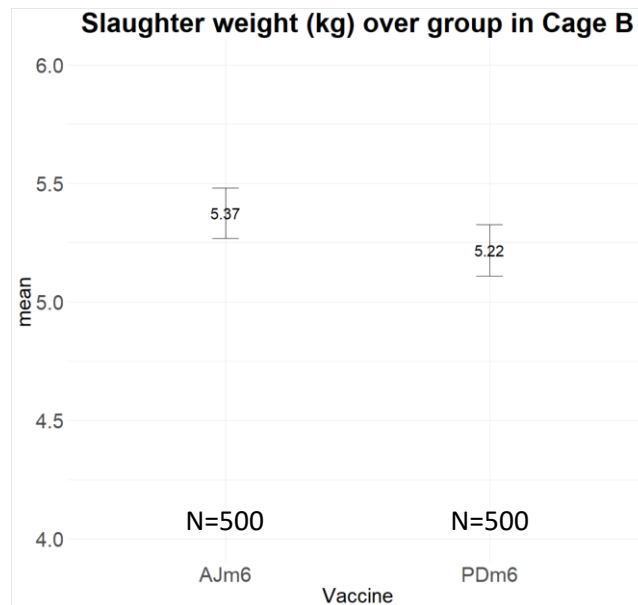
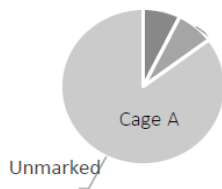
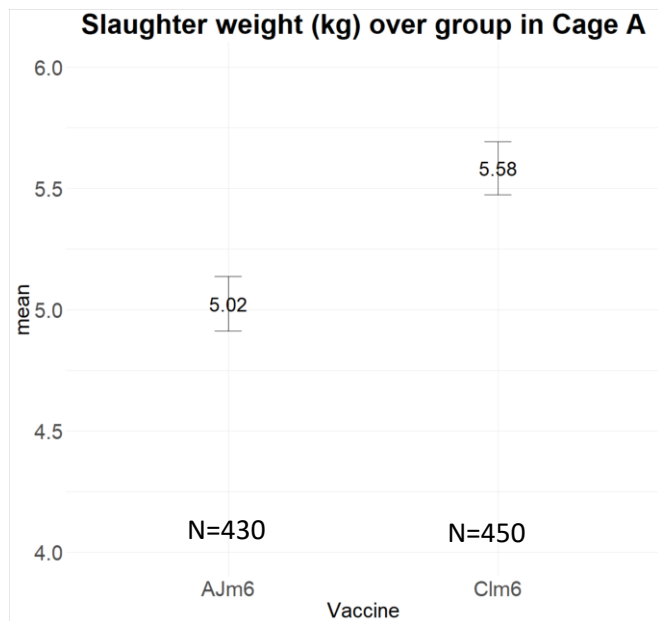
Maxilla study – SAV RNA (T-qPCR results / June 2019)



* vs. ** within each cage represent significant differences between test and control groups (Wilcoxon rank sum test; $p=0.03$)

Maxilla study – weights at slaughter

Bled non-gutted



Maxilla study – results of statistical analysis (slaughter weights)

Cage	Explanatory variables	Estimate	CI	p-value
Cage A	Intercept	5.23	5.12, 5.34	<0.01
	Vaccine group (AJm6)			
	Clm6	0.51	0.36, 0.65	<0.01
	Runt(no)	-1.30	-1.51,-1.09	<0.01
Cage B	Intercept	5.48	5.38, 5.58	<0.01
	Vaccine group (AJm6)			
	PDm6	-0.12	-0.26, 0.2	0.10
	Runt(no)	-2.07	-2.36, 1.78	<0.01

Result of OLS regression with harvest weight in kg as outcome variable in the maxilla study. Control vaccine AJm6, no as baseline in runts. In cage A total of 885 (AJm6; 455 and Clm6; 430) observation 1000 (500 in each group) observations in cage B. Adjusted $R^2 = 0.19$ in cage A and $R^2 = 0.17$ in cage B.

Cage study

Cage 1
AJm6

193,603

Cage 2
AJm6

195,533

Cage 3
Clm6

191,470

Cage 4
Clm6

194,180

Cage 5
PDm6

185,723

Cage 6
PDm6

190,873

Cage study – results from slaughter

Vaccine group	Cage	Harvest period in 2019	RGI	Harvest weight	Norm. harvest weight	No. Lice treatm.	Days starved	bFCR	Cum. mort	PD mort	Sup. grade
AJm6	1	14.06-06.11	95.0	4.99	5.17	3	38	1.22	10.0 %	3.4 %	98 %
AJm6	2	01.11-18.11	91.8	5.18	4.52	4	42	1.27	8.6 %	2.6 %	98 %
Clm6	3	14.06-03.07	96.9	3.69	5.78	1	27	1.10	13.2 %	0.2 %	96 %
Clm6	4	12.08-19.10	96.3	5.11	5.60	2	27	1.18	6.0 %	0.9 %	98 %
PDm6	5	24.10-04.11	94.7	5.30	5.12	4	31	1.26	9.5 %	3.9 %	98 %
PDm6	6	24.10-24.11	94.9	5.69	5.15	3	37	1.24	7.5 %	2.5 %	98 %

Conclusion

- Mortality was lower in the Clm6 group in both the PIT-tag and Maxilla study, significantly in the Maxilla study
- Only the Clm6 vaccine group showed significant increase in harvest weight. The effect was consistent in the PIT-tag and Maxilla study

Thanks to

- Elanco for providing funding for this study
- Åkerblå fish health services
- Pharmaq for providing injections pistol's and contributing with marking of fish in the maxilla trial (Cage B)
- Skala Maskon for development and testing of triple injection
- VESO Vikan: partnering in design and execution of the trial
- Staff at Vikenco
- SalMar colleagues
- Last and special thanks to SalMar staff at smolt facility and sea sites

An underwater scene featuring several salmon swimming in clear blue water. A large salmon is the central focus, with its mouth slightly open. Overlaid on the image is a technical diagram consisting of concentric circles, radial lines, and arrows, resembling a radar or sonar display. The text "PASSION FOR SALMON" is written in large, bold, orange letters with a diagonal hatching pattern, positioned over the central salmon and the technical overlay.

PASSION FOR SALMON

**TAKK FOR
OPPMERKSOMHETEN**
www.salmar.no



SALMAR
Passion for Salmon