



Norwegian Food Safety Authority

Pancreatic disease in Norway

Control strategies

Dublin 12.06.2019

Knut Roenningen, Senior Advisor – Diseases in aquatic animals, NFSA

Introduction

- New PD-legislation - background
- Strategy – main objectives and principles
- Action plan 2019 – measures to be taken

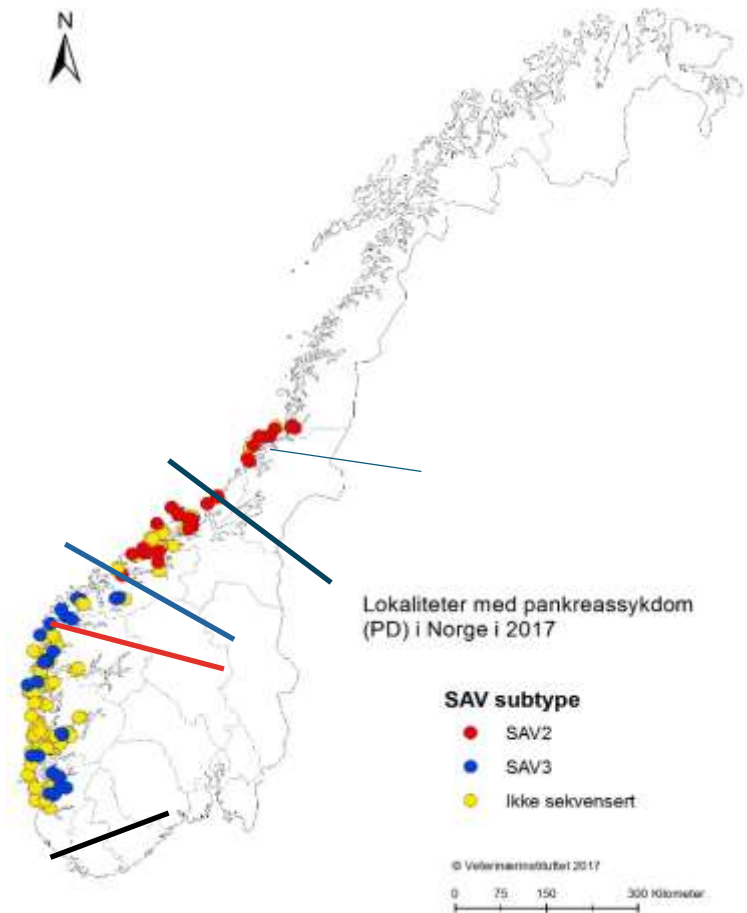


Photo: NFSA



Background

- Fragmented legislation
- Different approach to handling of the disease in different parts of Norway
- Lack of national strategy and coordination of control measures
- Increase in prevalence of PD – SAV3 South of Stadt
- Several new outbreaks of PD-SAV2 in areas outside the defined «PD-zone»



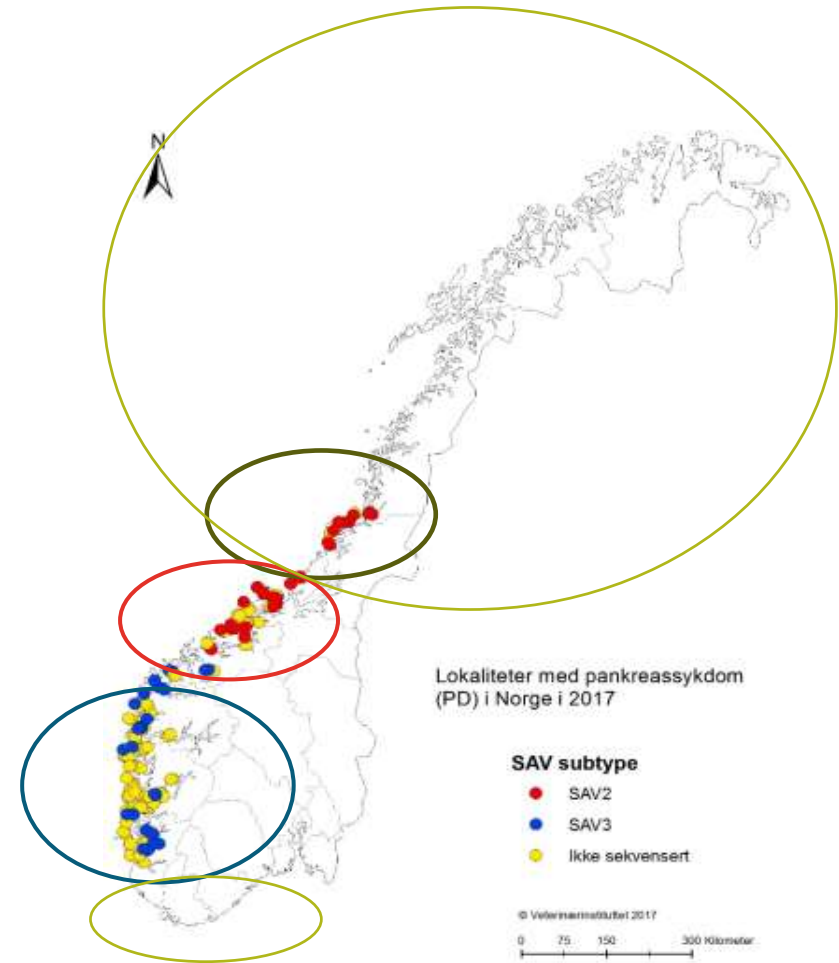
New national strategy

- New national PD-regulation adopted 2017
- National action plan describing both the action strategy and the mandatory or optional measures to be taken
- Risk based approach
- Instructions to the competent authority
- Guidelines to the industry



Main objectives

- Maintain «PD-free» status of areas within the national surveillance zones.
- Eradicate PD from the specific control zone situated in the middle of Norway.
- Avoid introduction of PD-SAV2 to the areas south of Stadt.
- Avoid introduction of PD-SAV3 to the areas north of Hustadvika.
- Keep smolt production plants free of SAV.
- Reduce the consequences of PD within the national PD-zone.



Local risk assessment

- **Main risk factors:**
 - Result of mandatory screening
 - Distance from infected sites/areas
 - Contact through wellboats
 - Contact through shared use of equipment and/or personell
 - Distance to slaughtering plant or other high risk facilities



General measures

- Increased surveillance of smolt before launched into the sea
- Increased surveillance of all sea-sites
- Movement and transport restrictions
- Mandatory coordinated following



Measures in national surveillance zones

- «Stamping out» of all fish when detecting SAV at a smolt producing plant
- «Stamping out» of all fish at a site if SAV is detected for the first time in an area within the national surveillance zone.
- Immediate establishing of control areas surrounding the infected establishment.
- Transportation of fish in closed vehicles
- Closed discharge of infected fish when slaughtered
- In general – vaccination is not recommended



Measures within the national PD-zone

- Movement restrictions
- Closed discharge of infected fish when slaughtered
- Optional establishing of control areas
- Vaccination recommended
- Special requirements when SAV 2 is detected south of Stadt and when SAV 3 is detected north of Hustadvika.



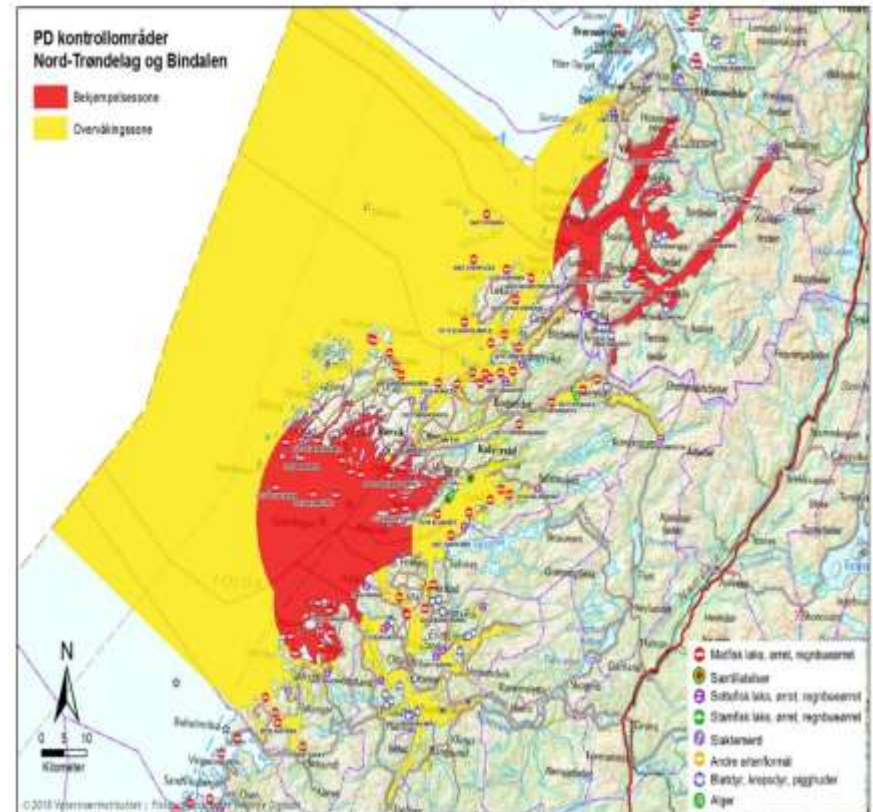
Measures in control areas

- **Eradication zone**

- Movement restrictions
- Slaughtering out within a certain time limit
- Slaughtering only on specially approved establishments
- Specially approved transportation routes
- Specific requirements for cleaning and disinfection of cages, nets and equipment

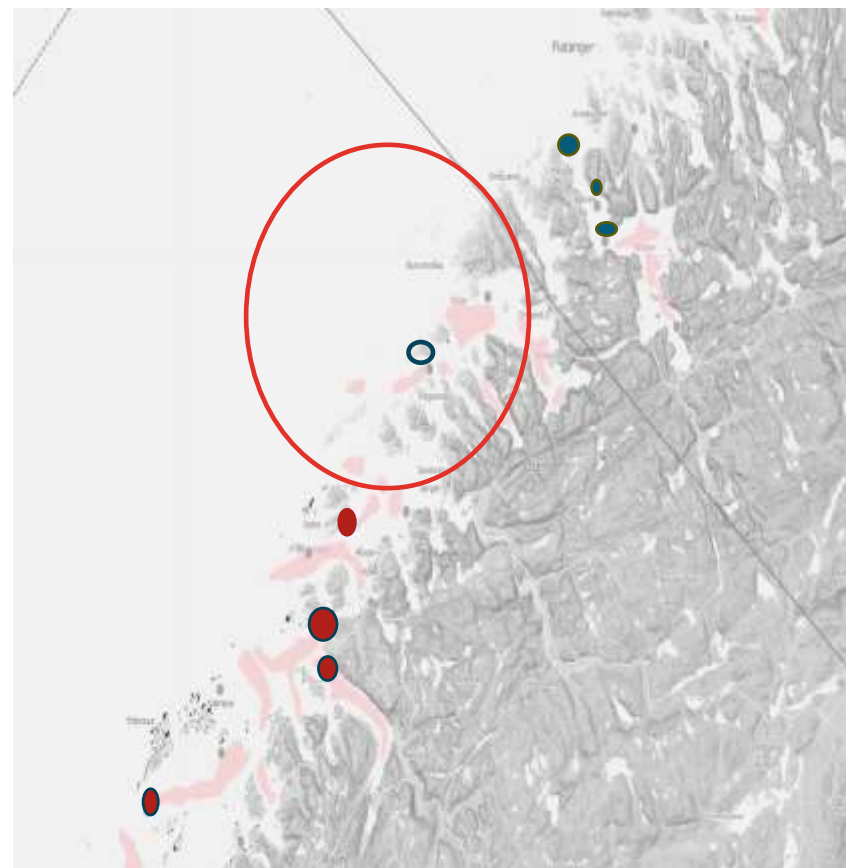
- **Surveillance zone**

- Mandatory surveillance
- Some transport restrictions



Measures - «border areas»

- «Safe» or low risk distance between infected and PD-free zones





Thank you for your attention