

Field study on cardiac anatomy/malformations

TriNation, Dublin 11th June 2019

Harriet Romstad

Background

- Field observations
 - «new» cardiac malformations
- Cooperation with Pharmaq Analytic
 - Categorization and description of the most common cardiac malformations



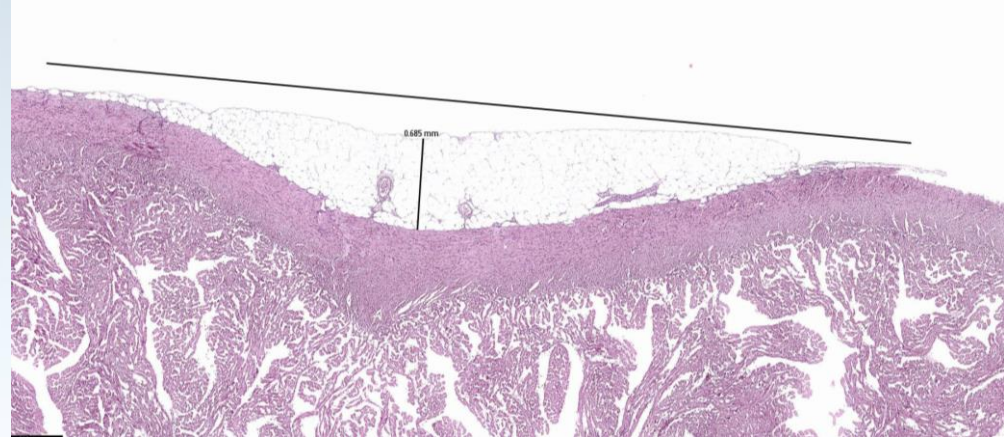
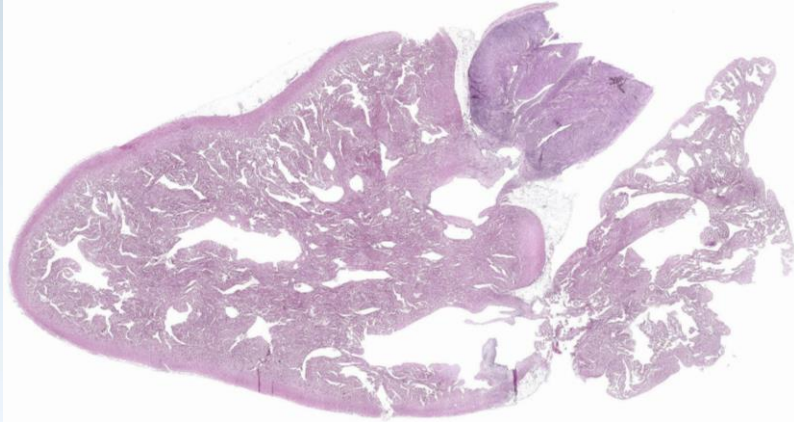
Material and method

- Hearts with different malformations collected by AQQ
- The hearts were photographed and fixated in formalin before shipment to lab (PA)
- The fixated hearts were photographed and examined histologically by PA
- Data from 6 different sites
 - 6 hatcheries
 - 3 broodstock companies

Classification

- Fat deposition
- Deviant bulbus arteriosus
- Constricted heart
- «Raised shoulder»
- Small/narrow hearts
- Twisted hearts

Fat deposition



Fatty tissue replacement for muscle tissue?

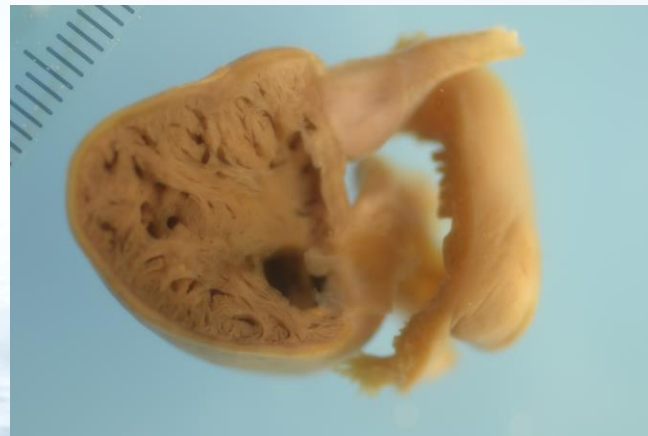
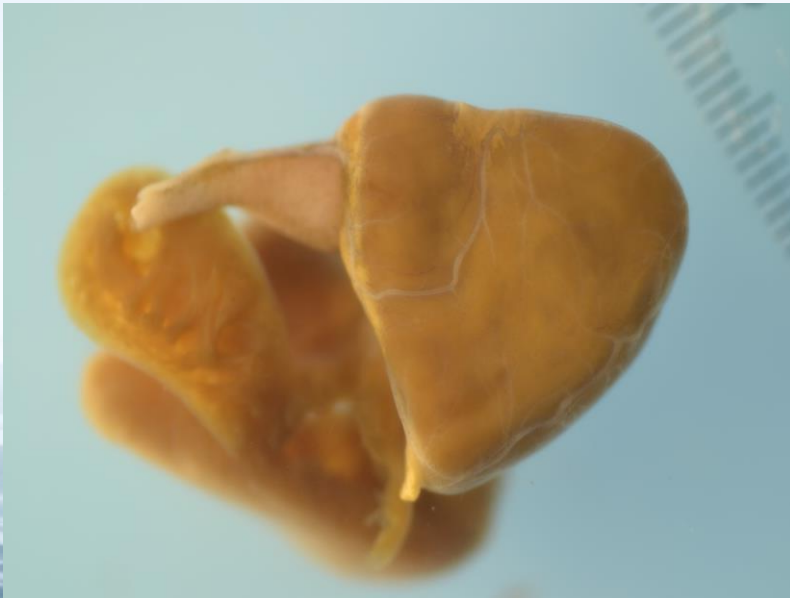
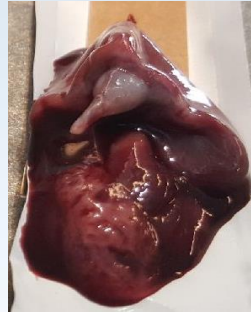
Quantification and description of tissue placement. Common finding is fat surrounding the bulbus and «over the shoulders» + area 2 in the picture:



- Collar: transition between bulbus arteriosus – atrium – ventricle
- Ventrale arch
- Heart apex
- Around coronar vessels

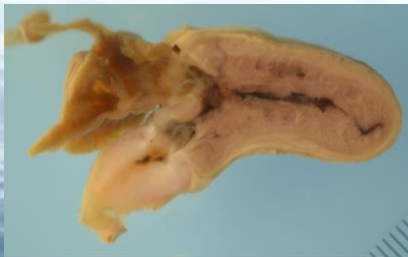
Deviant bulbus arteriosus

- Constricted
- Angle/ bend



Resulted in enlarged and thin walled atrium and ventricle

Constricted heart

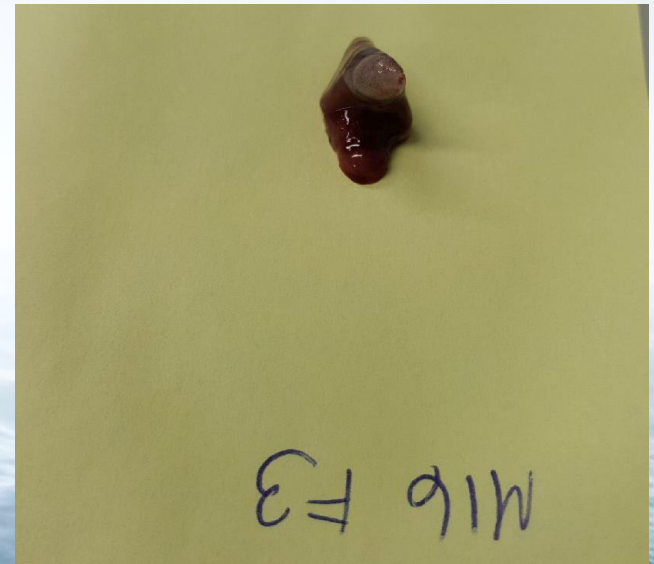


En kartank...

«Raised shoulder» –different degrees



Small / narrow hearts



Twisted hearts



Cardiac health

- Increased focus on cardiac malformations the previous 2 years → increased prevalence?
- A standardized method to classify and monitor prevalence of the different anatomical deviations is needed
 - Degree of malformation/reduced performance?
- Limited tools available to measure function

«Shape and function»



Form
og
funksjon



Evaluation of cardiac capacity and pathological stress in the heart

- **Heart weight**

Description of organ function / state

- **Chemical biomarkers:**

- Enzymes related to contractility
- Enzymes that provide information regarding damaged cardiac muscle (CK)

- **Molecular biomarkers (RT-qPCR):**

- ANP/BNP



Summary

- 6 different classifications of cardiac malformations:
 - Fat deposition
 - Deviant bulbus arteriosus
 - Constricted heart
 - «Raised shoulder»
 - Small/narrow hearts
 - Twisted hearts
- Further work needed:
 - Etiology
 - Correlation cardiac morphology/function
 - Biomarkers for cardiac capacity and state
- On-site risk assessment

Thank you for listening!

