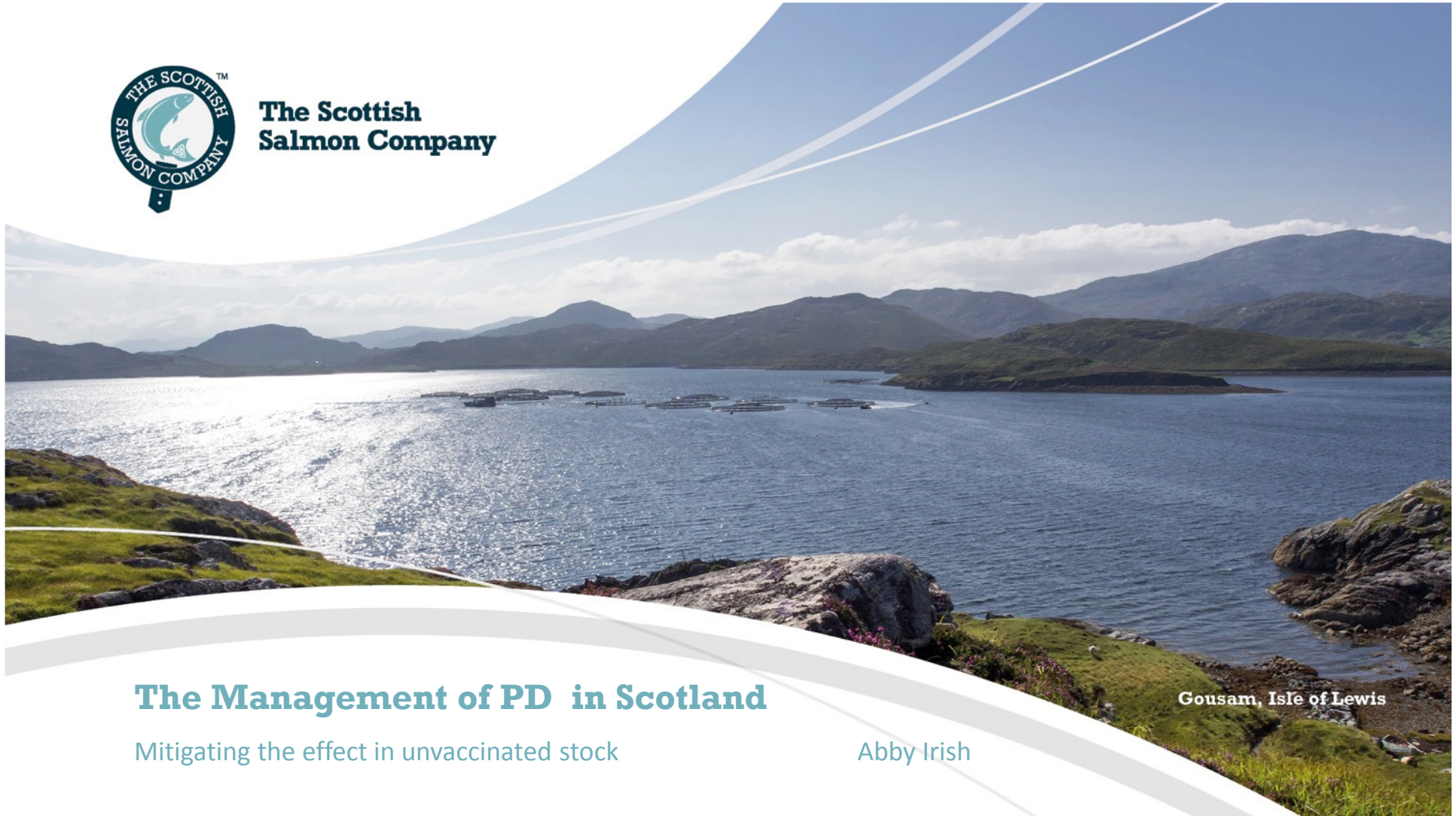




**The Scottish
Salmon Company**



The Management of PD in Scotland

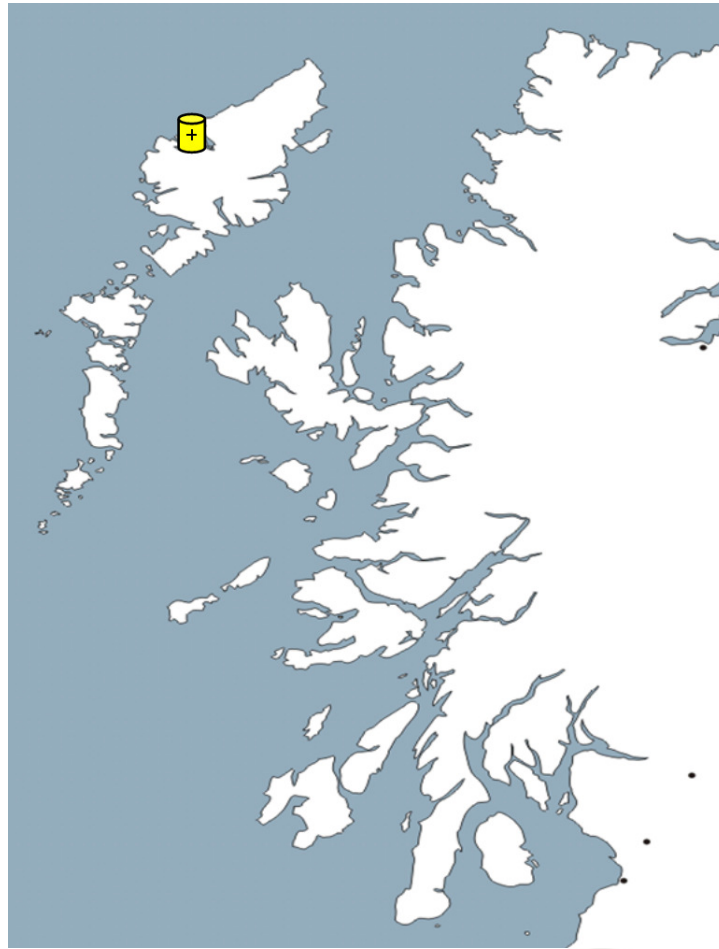
Mitigating the effect in unvaccinated stock

Abby Irish

Gousam, Isle of Lewis

SAV detected

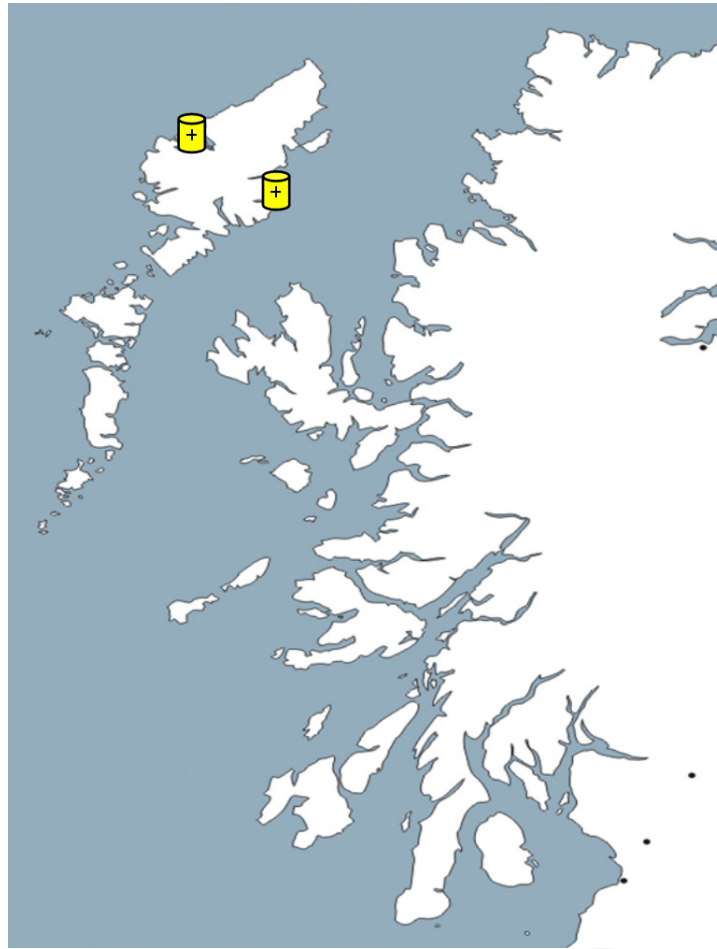
2007-2008 2 outbreaks



SAV detected

2007-2008 2 outbreaks

2009-2010 1 outbreak

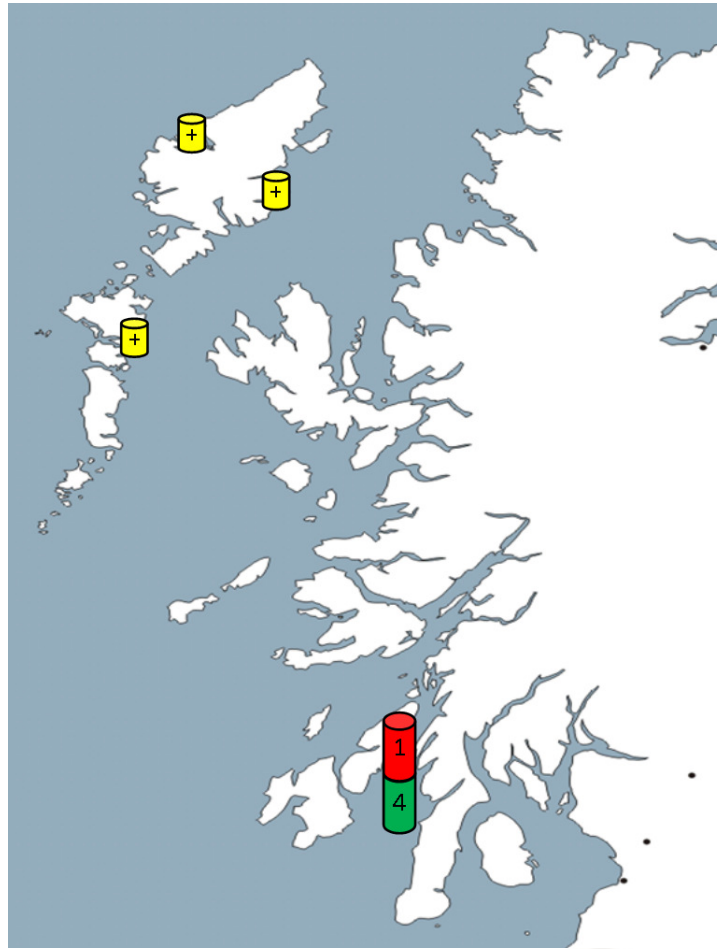


SAV detected

2007-2008 2 outbreaks

2009-2010 1 outbreak

2011-2012 6 outbreaks



Mitigation measure – Step 1

Increased monitoring

- Blood sampling initiated from 4 weeks prior to the historical danger period & then at 2 weekly intervals
- Histology sampling at the first SAV+ return and then every 4 weeks after that
- Subtyping of SAV

Mitigation measure – Step 2

Mitigation Measures

- Cancel/postpone any handling events where possible
- Introducing functional feeds/nutritional support
- Any scheduled in-feed medicinal treatments were administered with functional feed
- Monitored outcomes

Case Study 1 Unsubtyped

Background

- 13S1 generation, historical high risk period identified as being September/October
- Increased monitoring program implemented August 2013 and SAV first confirmed 06.09.13 in a single cage
- AGD forced treatment on 19.09.13 *13 days post diagnosis
- Nets changed at end of September 2013
- Functional feed started 29.09.13 and was administered until 17.11.13 (period of 8 weeks)
- Slice administered in October 2013 with functional feed



Case Study 1

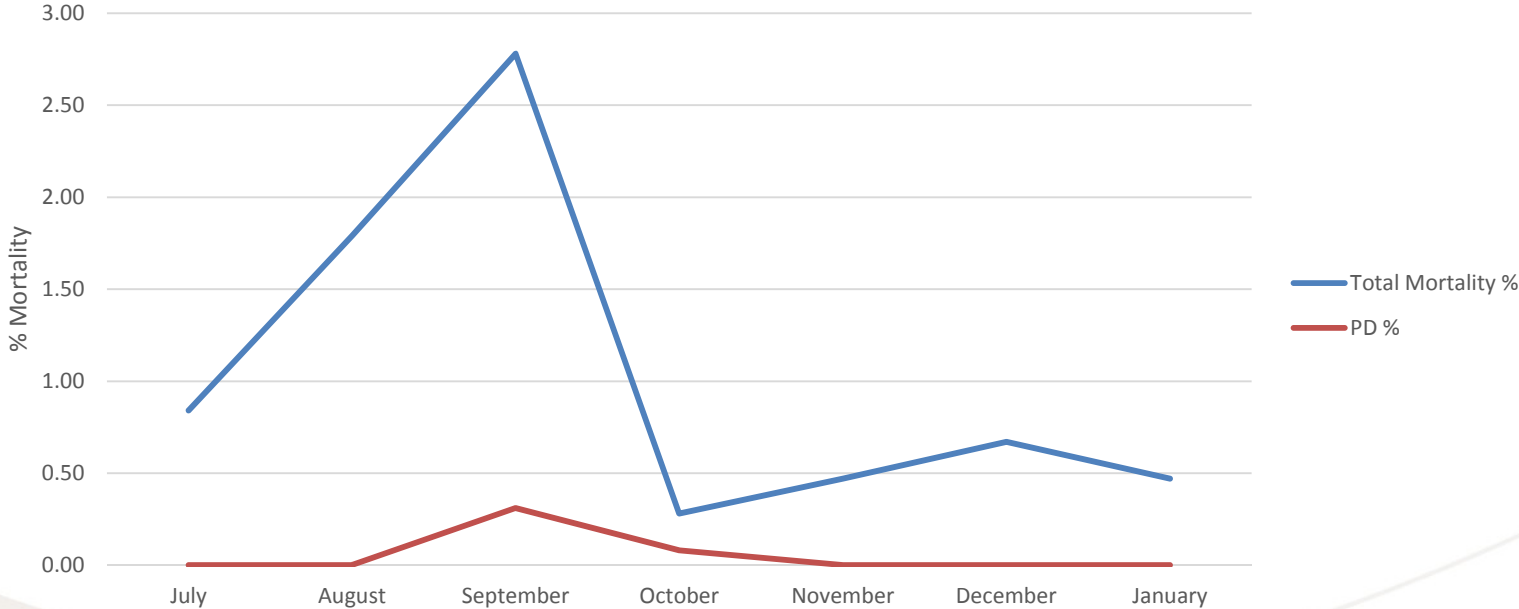
Outcomes

- Mortality attributed to PD very low (0.39%)
- 0.31% occurred around time of AGD treatment
- Functional feed given
- Full effect of Slice treatment achieved



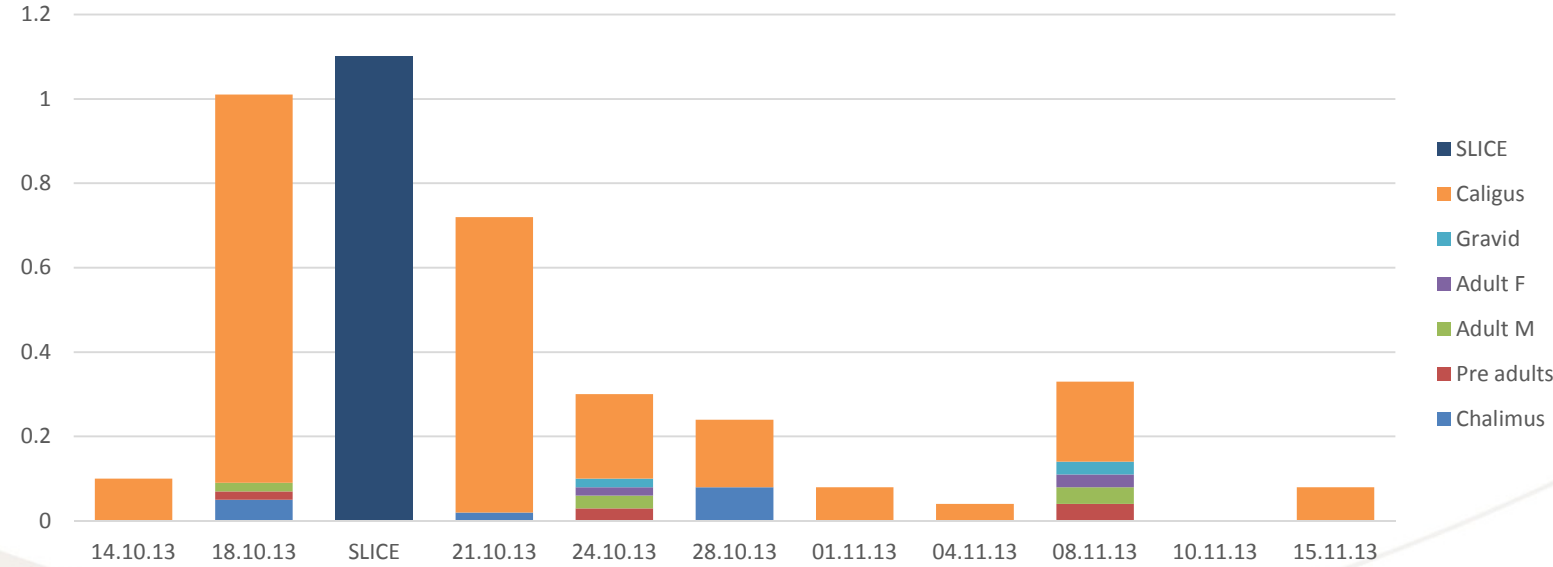
Case Study 1 : Mortality

Case study 1 13S1 Generation



Case study 1: Lice counts

Case Study 1 13S1 generation
With functional feed



Case Study 2 SAV 5

Background

- 15S1 generation, historical high risk period identified as being September/October
- Monitoring program in place, SAV first detected 06.10.15
- Nets washed *in situ* during outbreak
- AGD forced treatment 26.10.15 *20 days post diagnosis
- Functional feed not given due to silo space and resultant delay in start
- Slice administered in October 2015 with no functional feed



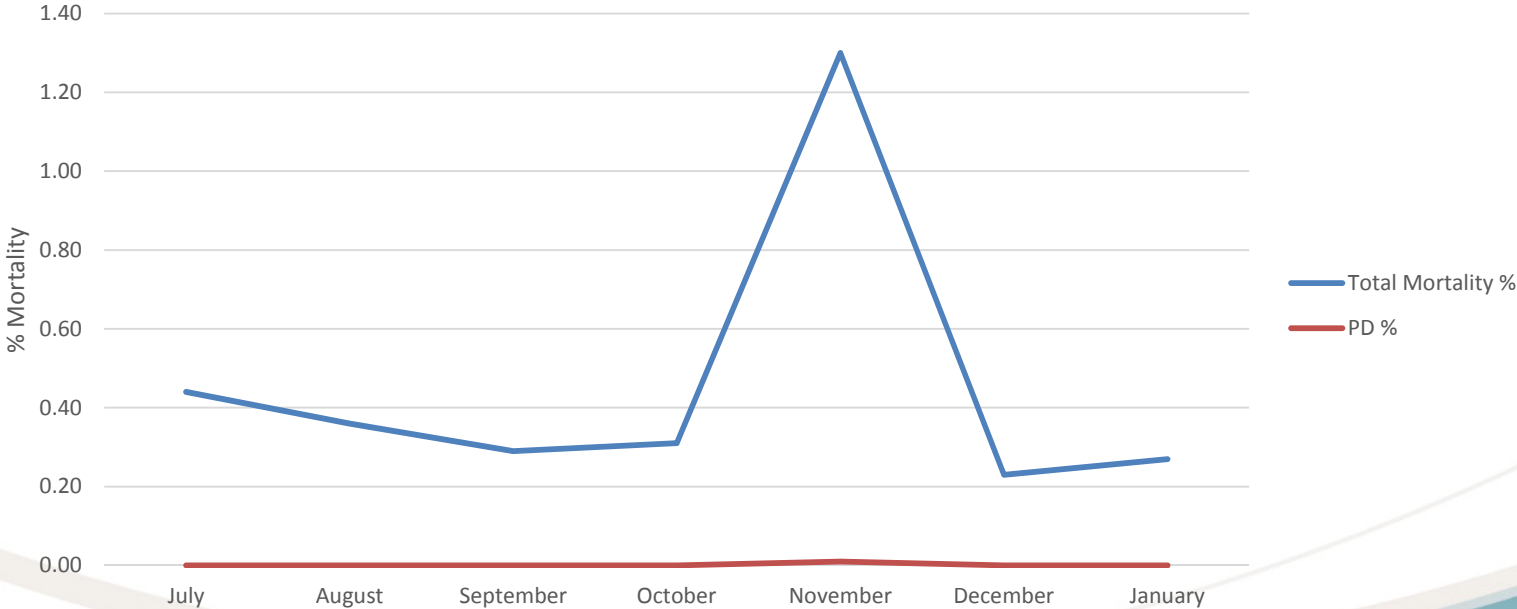
Case Study 2 SAV 5

Outcomes

- Mortality attributed to PD very low (0.01%)
- All PD mortality occurred around time of AGD treatment
- No functional feed given
- Full effect of Slice treatment achieved although slight delay before effect

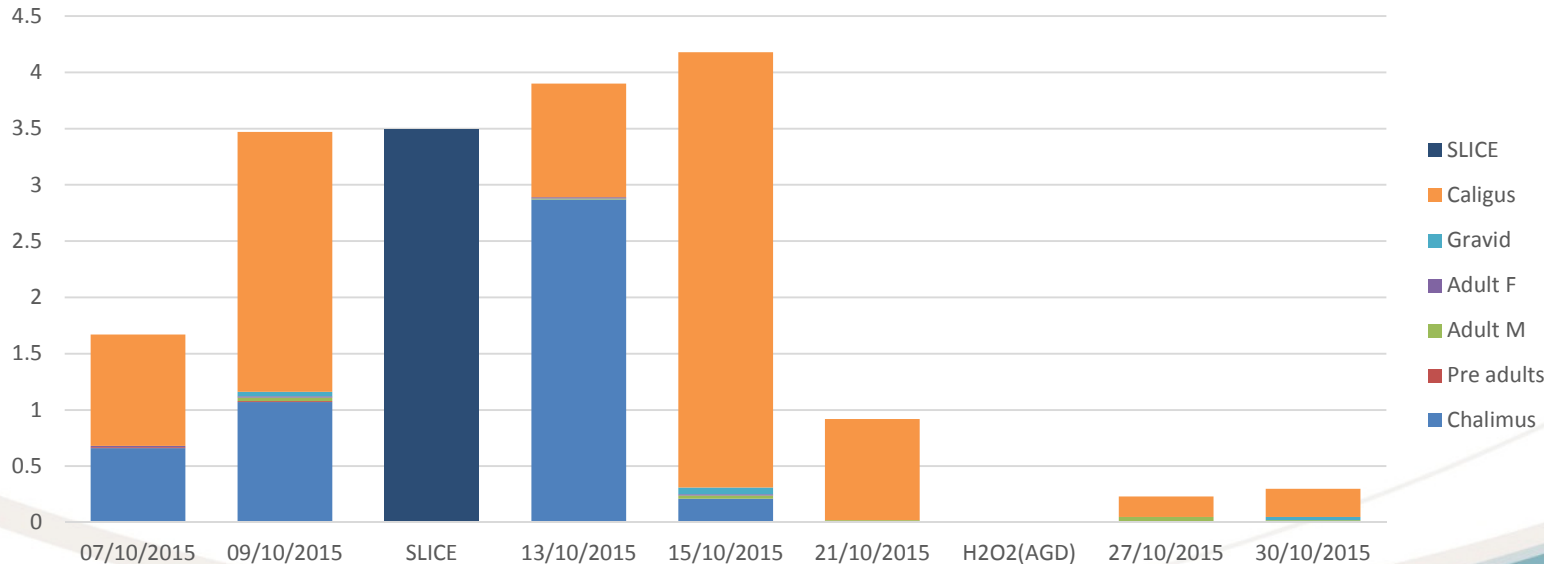
Case study 2: Mortality

Case study 2 15S1 Generation



Case study 2: Lice counts

Case Study 2 15S1 generation
Without functional feed



Case Study 3 SAV 1

Background

- 1450 generation, no historical risk although other sites in area have historically seen outbreaks November-December
- Monitoring program in place November 2014, SAV first detected 12.12.2014
- No handling occurred during outbreak
- Slice administered in December 2014 with no functional feed



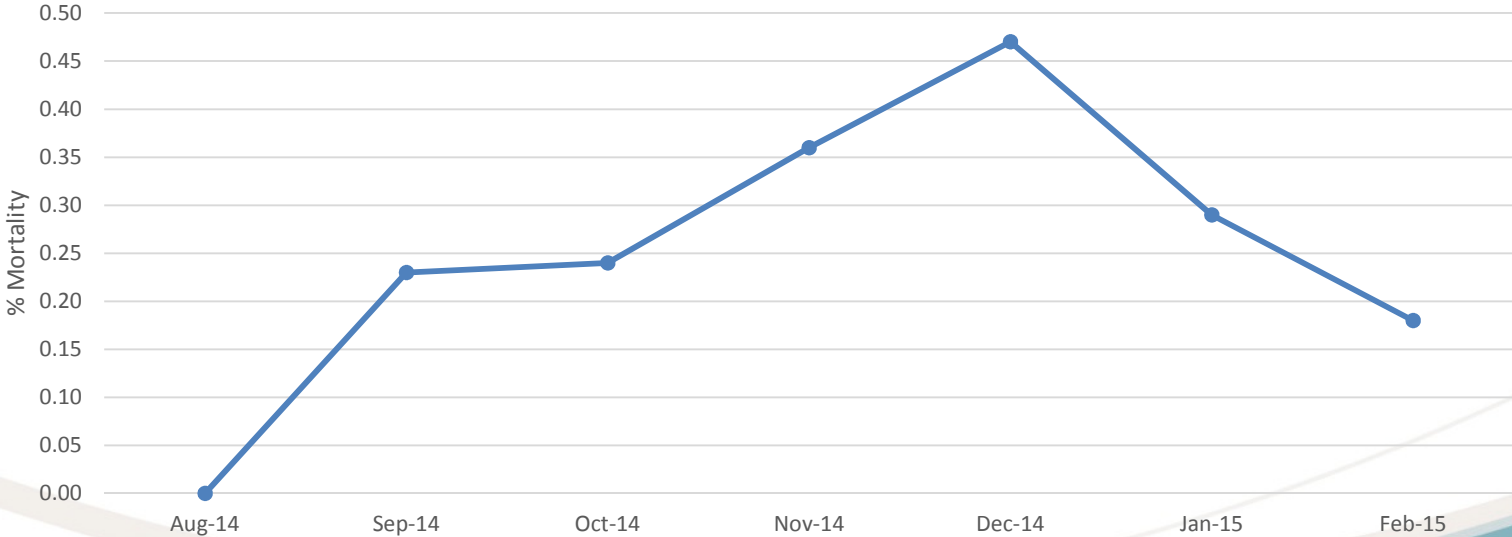
Case Study 3 SAV 1

Outcomes

- No mortality attributed to PD although increase in “production” mortality over the outbreak period
- AGD present throughout the outbreak
- Full effect of Slice treatment achieved although effect slightly delayed?

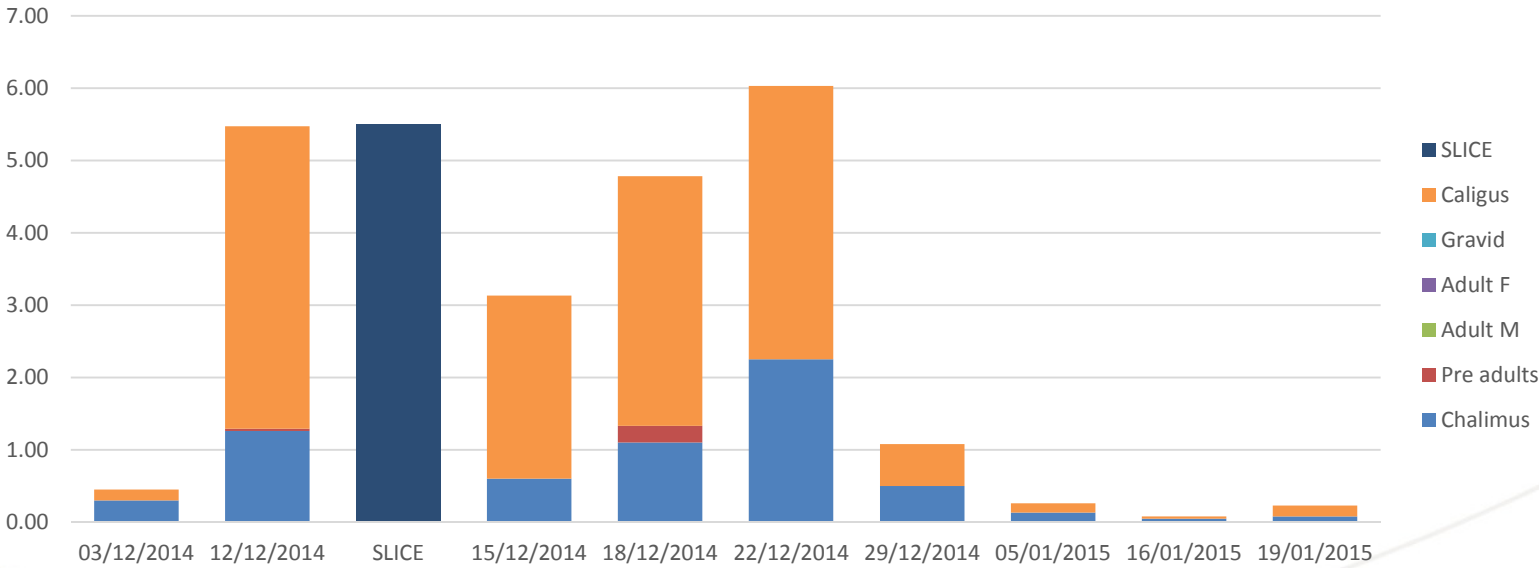
Case study 3: Total Mortality

Case study 3 14S0 generation
Total mortality
*no PD mortality recorded



Case study 3: Lice counts

Case Study 3 1450 generation
Without functional feed



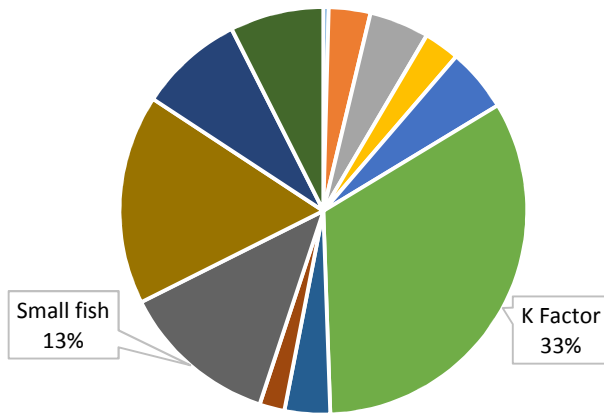
Conclusions (Tentative)

- Mortality more a function of;
 - SAV Subtype
 - Concurrent health challenges
 - Handling including timing of handling
- Functional feed appears to improve the uptake of Slice

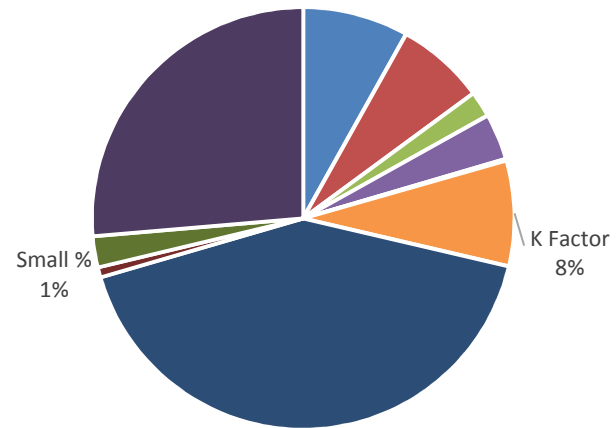


Harvest downgrades

SAV 1
No functional feed



SAV 5
No functional feed



Recommendations

- Identify high risk periods
- Implement screening program around those periods
- Keep minimal feed on site during high risk periods
- Treat AGD as soon as possible following confirmation
- If possible leave at least 4 weeks post diagnosis of PD before handling





The Scottish Salmon Company

The Scottish Salmon Company Limited

8 Melville Crescent
Edinburgh, Scotland, UK
EH3 7JA

Tel: +44 (0) 131 718 8500

Email: info@scottishsalmon.com
sales@scottishsalmon.com

www.scottishsalmon.com

Argyll Office

Ardkinglas Estate, Cairndow, Argyll PA26 8BH

Hebridean Office

Marybank Estate, Stornoway, Isle of Lewis HS2 0DB

