

Salmonid alphavirus (SAV) and PD in Ireland 2012

Hamish Rodger,
Vet-Aqua International,
Oranmore, Co. Galway

www.vetaquainter.com



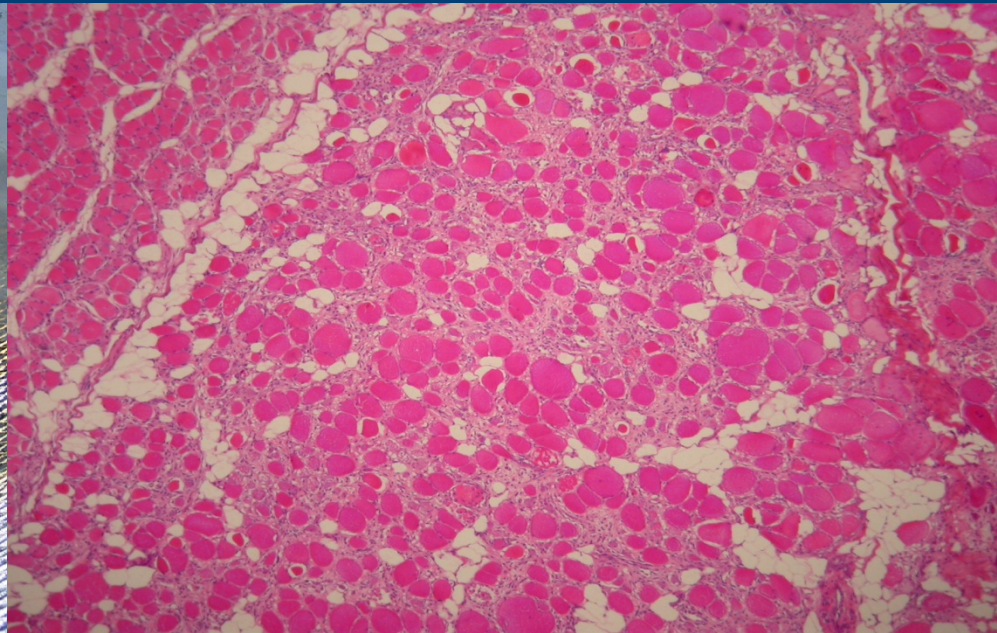
Salmonid alphavirus (SAV) in Ireland 2012

- 9 inputs of smolts (5.1 million fish)
- 4/9 inputs positive for SAV
- Mortalities ranged from 0.1 to 4% due to PD (2% average)



Pancreas disease (PD) diagnosis (case definition)

1. Clinical history & signs +
2. Gross pathology +
3. Laboratory tests positive (histopathology, isolation/serology, PCR)

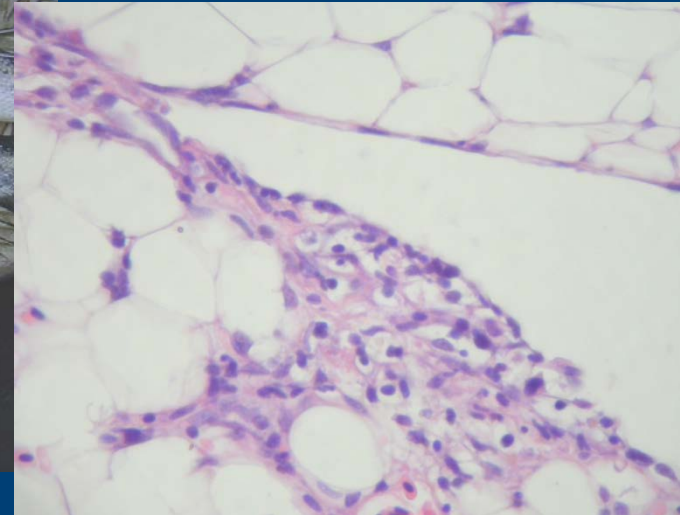


Detection of SAV \neq Pancreas Disease (PD)

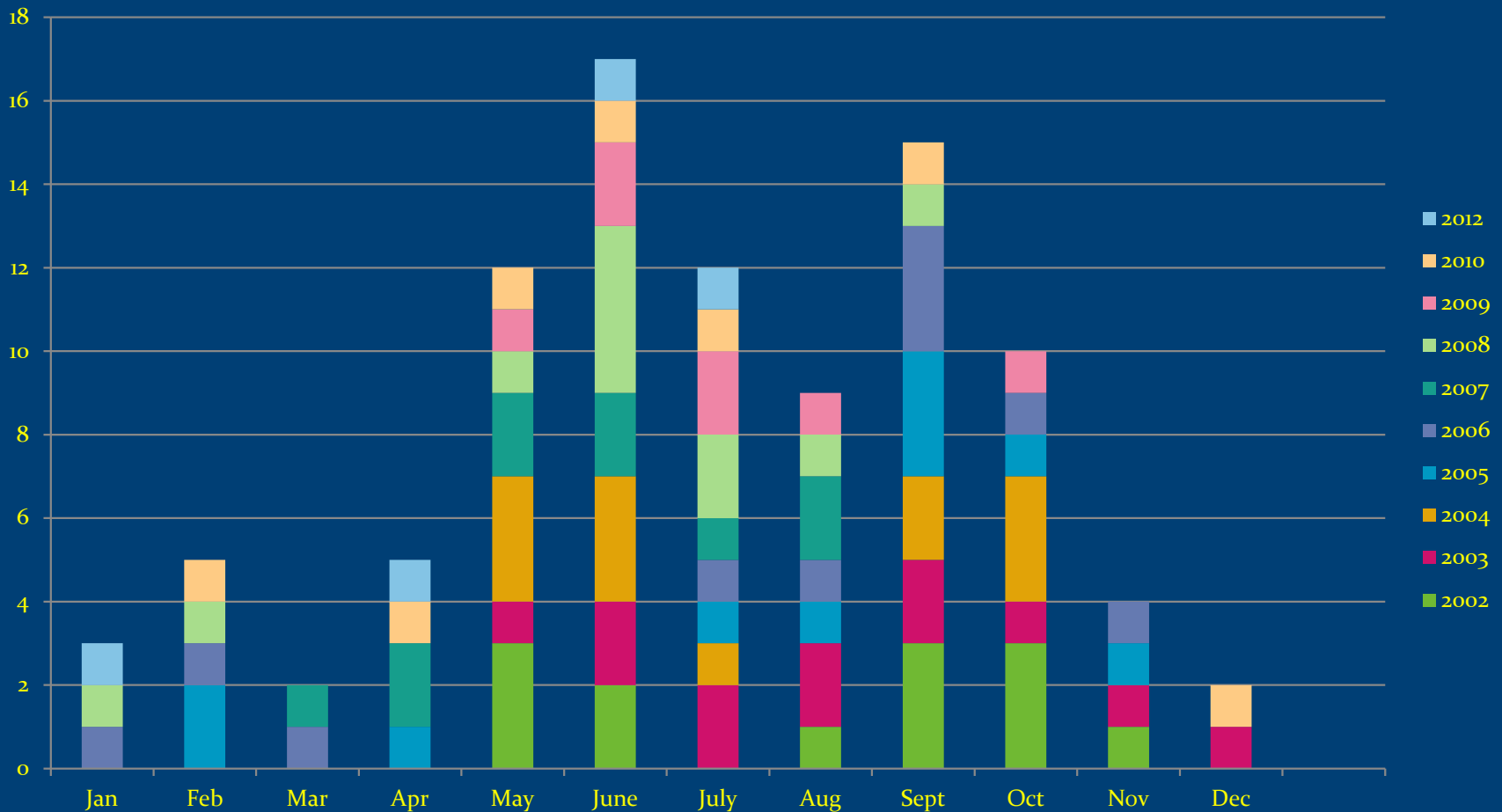
Pathogen or Disease

PD 2012 Ireland

- 2012 – mortality 2% (lowest in 12 years)
- 55% vaccinated with Norvax Compact PD
- Some chronic PD



Time of PD outbreaks 2002 - 2012



2012 : average time from sea transfer to PD/SAV positive 5 months
(range 3 to 8 months)

PD impact

- Impact over the last three years low although virus (SAV) still present
- Why?
- Virus factors?
- Fish factors?
- Environment/management factors?



Amoebic gill disease (AGD)

Multination Gill Health Initiative

vetaquainter@gmail.com

Acknowledgements

- Salmon farmers of Ireland (Marine Harvest Ireland, Mannin Bay Salmon Co. Ltd., Muirachmhainni Teo., Ocean Farm Ltd., Murphys Irish Seafood)